

Take a closer look

at Focus Textile Machinery Solutions



FOCUS
LABEL MACHINERY LTD
LX SERIES

LETTERFLEX

TEXTILE PRINT & CONVERTING SYSTEMS

INTRODUCTION

As the worlds leading manufacturer of narrow web Textile Printing Machinery Focus Label Machinery are innovating a new range of Letterflex Presses that not only enhance quality & production output, but also enter the equipment into a wider range of applications. The LX range will Print Tagless Labels & Transfer Papers, Self Adhesive Papers, Ribbons, Labels, Elastics. These are all possible with a range of Options and the LX printing system.

Focus Label Machinery are the only company innovating & pioneering the new technology and the only manufacturer to provide integrated cutting technology for enhanced production and guaranteed quality. The Patent protected LX Letterflex system adds value to your business through quality & flexibility. Focus & the Letterflex system is the perfect partner for your business and provides a global industry standard, accepted by only worlds the leading apparel & trimmings suppliers.

LX SERIES

Focus has redesigned the entire Letterflex equipment range to meet the latest demands in the Apparel supply market. Improved productivity is the key, with time & waste saving features that can deliver both small & large volume label production cost effectively. The Patent protected LX Range delivers unrivalled performance & ease of use at a price less than that of existing equipment. Combined with the Focus Ultrasonic Label Cutting system we present the most efficient printed label production system in the world today. Contact Focus today & launch yourself ahead of the competition with the new generation of Letterflex printing presses.

APPLICATIONS

Tagless Labels & Transfers,
Garment & Apparel Labels, Decorative Ribbons,
Die Sublimation Papers,
Self Adhesive Labels, Stickers & Tags, Elastics.

LX SERIES OPTIONS

- ULTRASONIC CUTTING SYSTEM (LX4 & LX6 only)
- MULTI UNWIND/REWINDS (Multi Ribbon Printing)
- ROTARY DIE STATION (LX4 & LX6 only)
- PRINT CYLINDERS & GEARS
- CERAMIC ANILOX ROLLS
- ADDITIONAL QC CARTRIDGES
- AUTO END OF ROLL STOP
- VIDEO INSPECTION
- IR DRYING SYSTEM UPGRADE (LX FLEXO)
- UV DRYING UPGRADE (LX FLEXO)
- UNWIND/REWIND UPGRADE (Heavy Duty, LX FLEXO)



PRESS MODEL LX2



REGISTER CONTROLS



CONTROL BOX



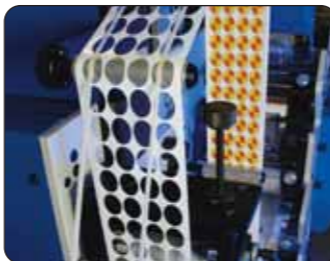
DIE CUTTER



PRESS MODEL LX6/LX4



ROTARY DIE STATION



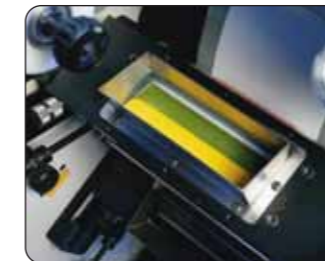
ULTRASONIC CUTTER



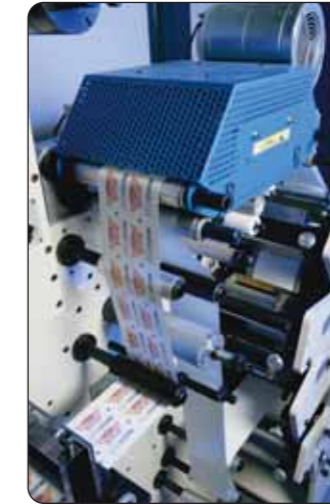
PRINT CYLINDER



INK STATION



HEATER BOX



ELASTIC TENSION CONTROL



TENSION CONTROL



- Quick Change 'QC' Cartridges for Rapid Job & Colour Changes.
- Rapid Print 'RP' Adjustments with Minimal Operator Skill.
- Leak Free Enclosed Ink Fountains
- On Run Register Adjustment
- Operator Friendly Controls
- Fast and Easy Operation
- Multi Web Printing & Processing



PRESS MODEL LX FLEXO

LX SERIES

SHOWROOM AND TRAINING



LABELS



CURING OVEN



PLATEMAKER

TRANSFER PRINTS



CONCEPT & DESIGN

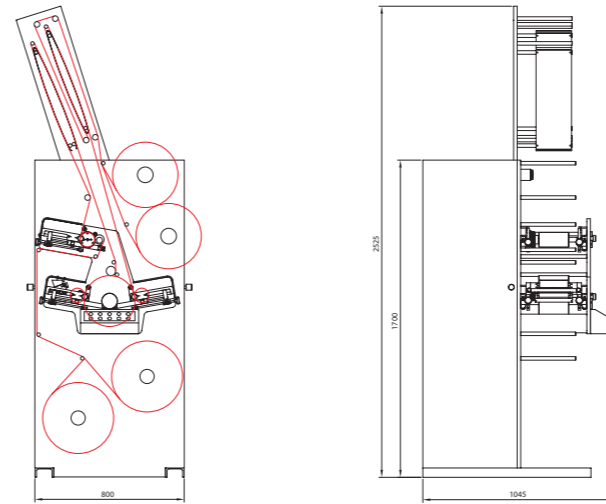


TEXPRINT INKS

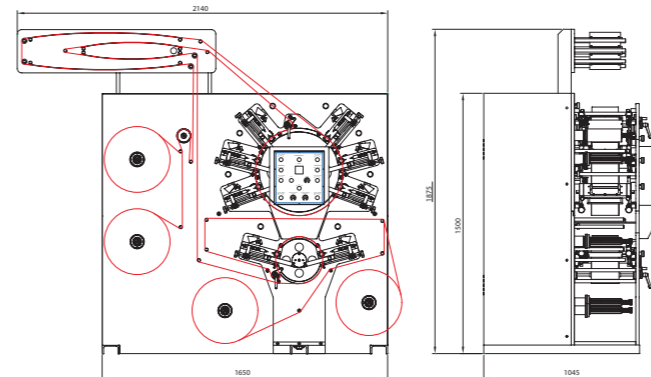


A New Generation Of Textile Label Machines....

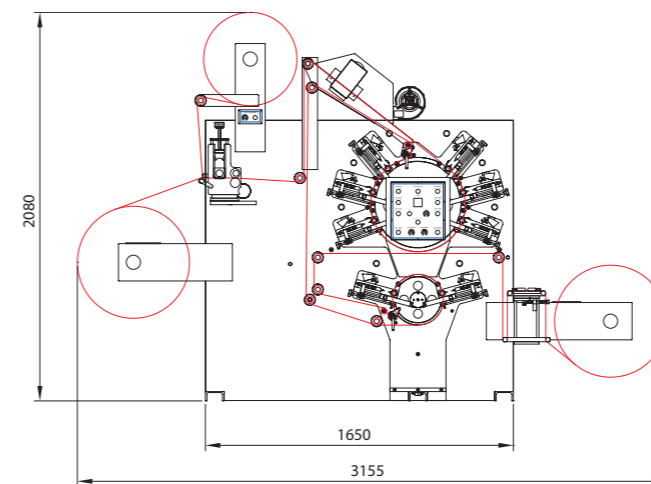
LX2 SERIES DIAGRAM



LX6 SERIES DIAGRAM



LX6 FLEXO SERIES DIAGRAM



LX SERIES OPTIONS

- ULTRASONIC CUTTING SYSTEMS (LX6 only)
- ROTARY DIE STATION (LX6 only)
- PRINT CYLINDERS & GEARS
- AUTO END OF ROLL SWITCH OFF
- ANTI STATIC BARS
- WEB CLEANERS
- ADDITIONAL QC INK CARTRIDGES
- MECHANICAL OR AIR OPERATED CORES
- VIDEO INSPECTION • UV DRYING

LX SERIES SPECIFICATIONS

Gearing	32 D.P.
Max Print Width	150mm
Max Print Length	300mm
Min Print Length	100mm
Unwind	1 or 2 option, 450mm Diameter max
Rewind	1 or 2 option, 450mm Diameter max
Core Diameter	38mm or to suit client
Press Speed	Variable speed drive 0-70 Mts /min.
Drying System	Drying Tunnel.
Patented 'QC' Ink System	Quick change self contained leak free Ink Cartridge
Patented 'RP' Print System	Rapid Print Setting & Controls
Anilox Rolls	Ceramic
Register System	Patented system providing 'On Run' lateral & linear adjustment
Rate Counter	Metres or Imperial
Guarding	CE standards

NUMBER OF COLOURS

LX2	2 Face + 1 Reverse
LX4	4 Face + 2 Reverse
LX6	6 Face + 2 Reverse

SERVICE REQUIREMENTS

Electrical:	220/240V, Single Phase, 19 Amps
Air	10PSI @ 4 CFM
LX2 Dimensions	105 X 80 X 252cm High
LX4 & LX6 Dimensions	170 X 90 X 195cm High
Weight	650 to 850 Kgs

